



ADVANCED

KI-51 «SONIA»
RECONNAISSANCE

1:72

model # CP72012

scale model kit

SPAN: 168 mm



LENGTH: 128 mm



NUMBER OF PARTS: 264 pcs

- | | |
|----------------------------------|------------------------------|
| 1 stages of assembly | ? optional |
| A variants of assembly | glue by super glue |
| A1 part number | do not glue |
| 1 separate details | make a hole |
| 1 apply decals | detach with knife |
| 1 apply the adhesive mask | paint |
| bend | repeat the operation N times |

Ki-51 "Sonia"

Role

Light bomber/dive bomber

Manufacturer

Mitsubishi Jukogyo KK

First flight

mid-1939

Primary user

Imperial Japanese Army Air Force

Number built

2 385

The Mitsubishi Ki-51 "Sonia" was a light bomber/dive bomber in service with the Imperial Japanese Army during World War II. It first flew in mid-1939. Initially deployed against Chinese forces, it proved to be too slow to hold up against the fighter aircraft of the other Allied powers. As the war drew to a close, the Japanese began using them in kamikaze attacks.

The series began as two prototypes. Its design incorporated a crew of two seated in tandem under a long greenhouse-style canopy with the pilot in front and a gunner in back. The cockpit sat ahead of midships and over the monoplane wing assemblies which themselves were straight projections with rounded tips. The large radial piston engine was mounted in a forward compartment as usual and the fuselage tapering elegantly to a point under the tail. A single rounded vertical tail fin was used along with low-set horizontal tailplanes. The undercarriage was of the tail-dragger arrangement and fixed in place with aerodynamic fairings set over the main legs - typical of early-war mounts such as the Ki-51.

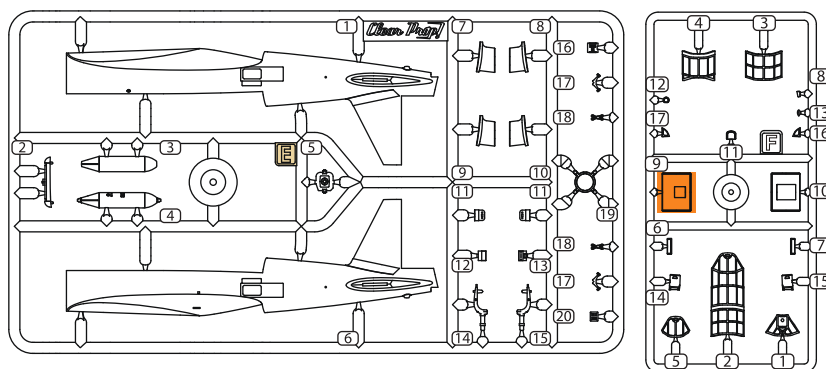
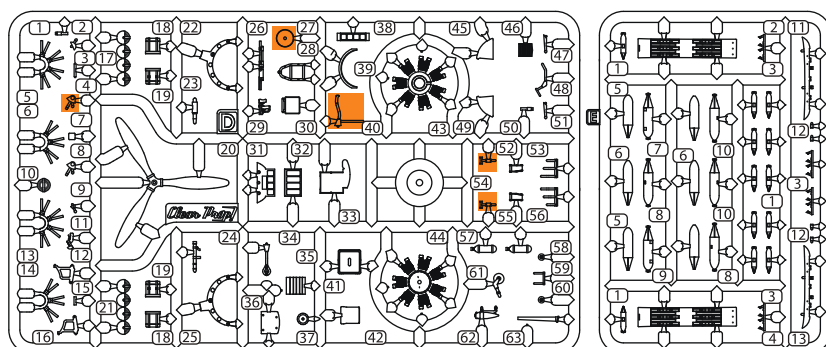
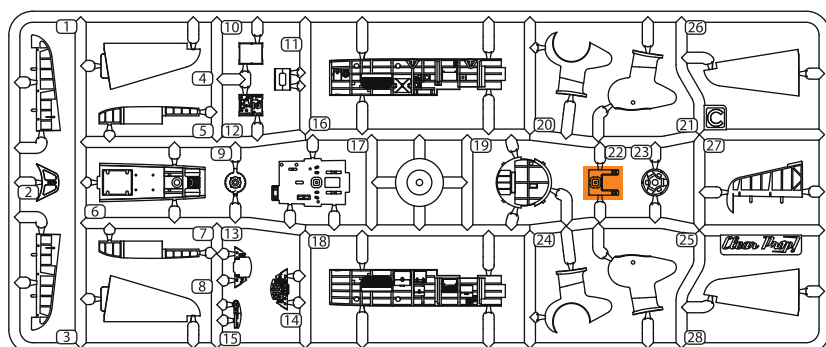
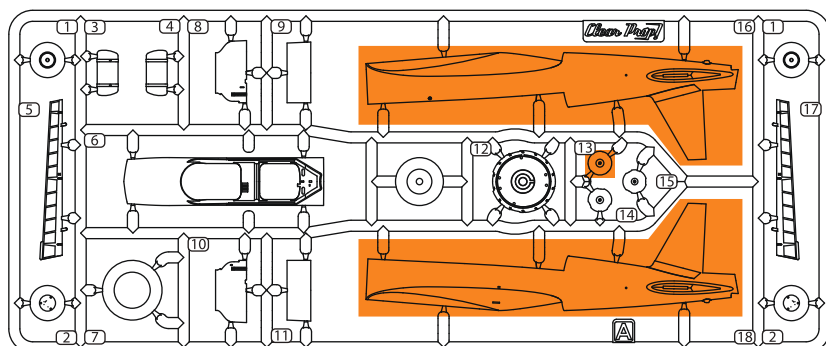
Dimensions: length - 9.2 meters, wingspan - 12 meters, height - 2.7 meters. Maximum Take-Off Weight - 6,415 lbs. Power came from a single Mitsubishi Ha-26-II series 14-cylinder radial piston engine developing 950 horsepower. Maximum speed reached 265 miles per hour, a service ceiling up to 27,130 feet.

Standard armament - 2x fixed, forward-firing 7.7mm Type 89 machine guns. The rear operator managed a single 7.7mm Te-4 series machine gun. Ki-51 was cleared to carry up to 440lbs of bombs.

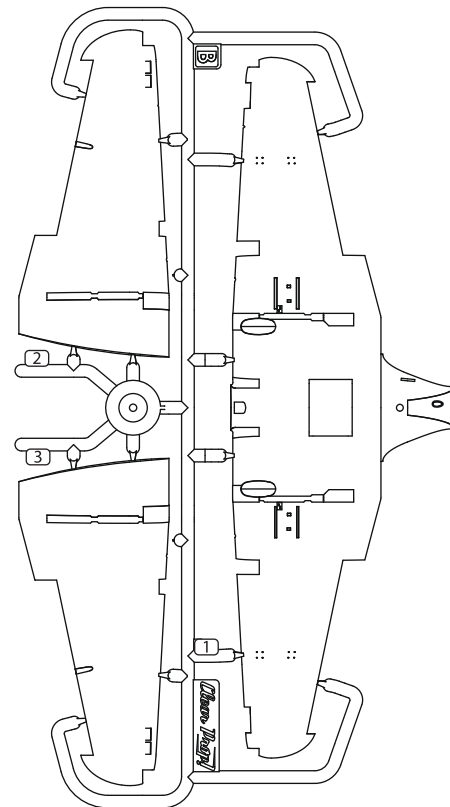
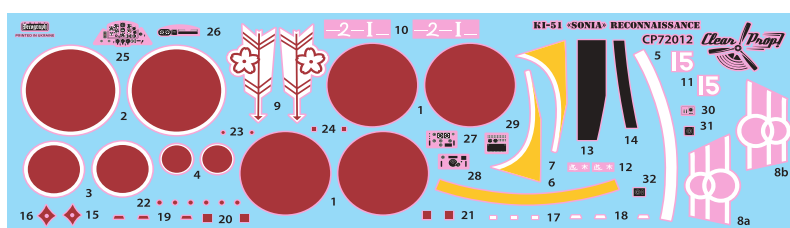
REQUIRED PAINTS

MR. COLOR 1
A.MIG-0050
WHITEMR. COLOR 16
A.MIG-0260
IJA GREENMR. COLOR 28
A.MIG-0191
STEELMR. COLOR 47
A.MIG-0093
CLEAR REDMR. COLOR 61
A.MIG-0187
BURNT IRONMR. COLOR 128
A.MIG-0258
IJA GRAY GREENMR. COLOR 131
A.MIG-0034
PROPELLER COLORMR. COLOR 138
A.MIG-0092
CLEAR GREENMR. COLOR 8
A.MIG-0195
SILVERMR. COLOR 55
A.MIG-0056
KHAKIMR. COLOR 137
A.MIG-0033
TIRE BLACKMR. COLOR 2
A.MIG-0046
BLACK SCHWARZMR. COLOR 126
A.MIG-0270
COCKPIT COLOR
(MITSUBISHI)MR. COLOR 58
A.MIG-0125
ORANGE YELLOWAMMO
by MIG Jimenez

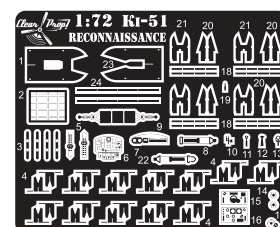
THIS MODEL IS PRODUCED FOR EXPERIENCED MODELERS OVER 14 YEARS



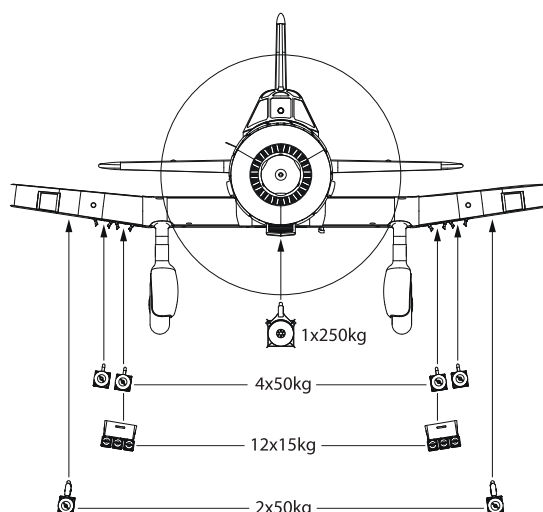
DECAL SHEET



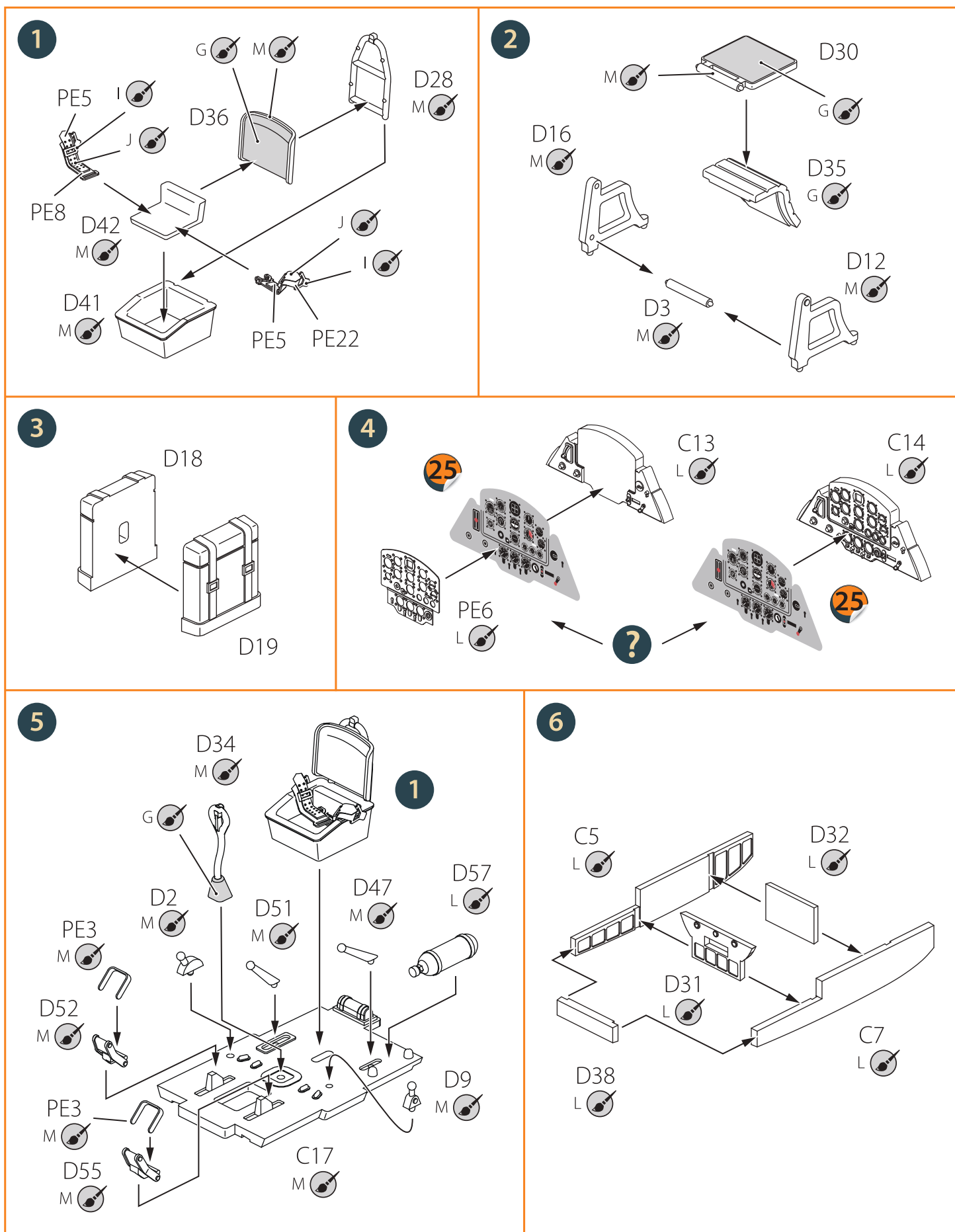
PHOTOETCHED PARTS

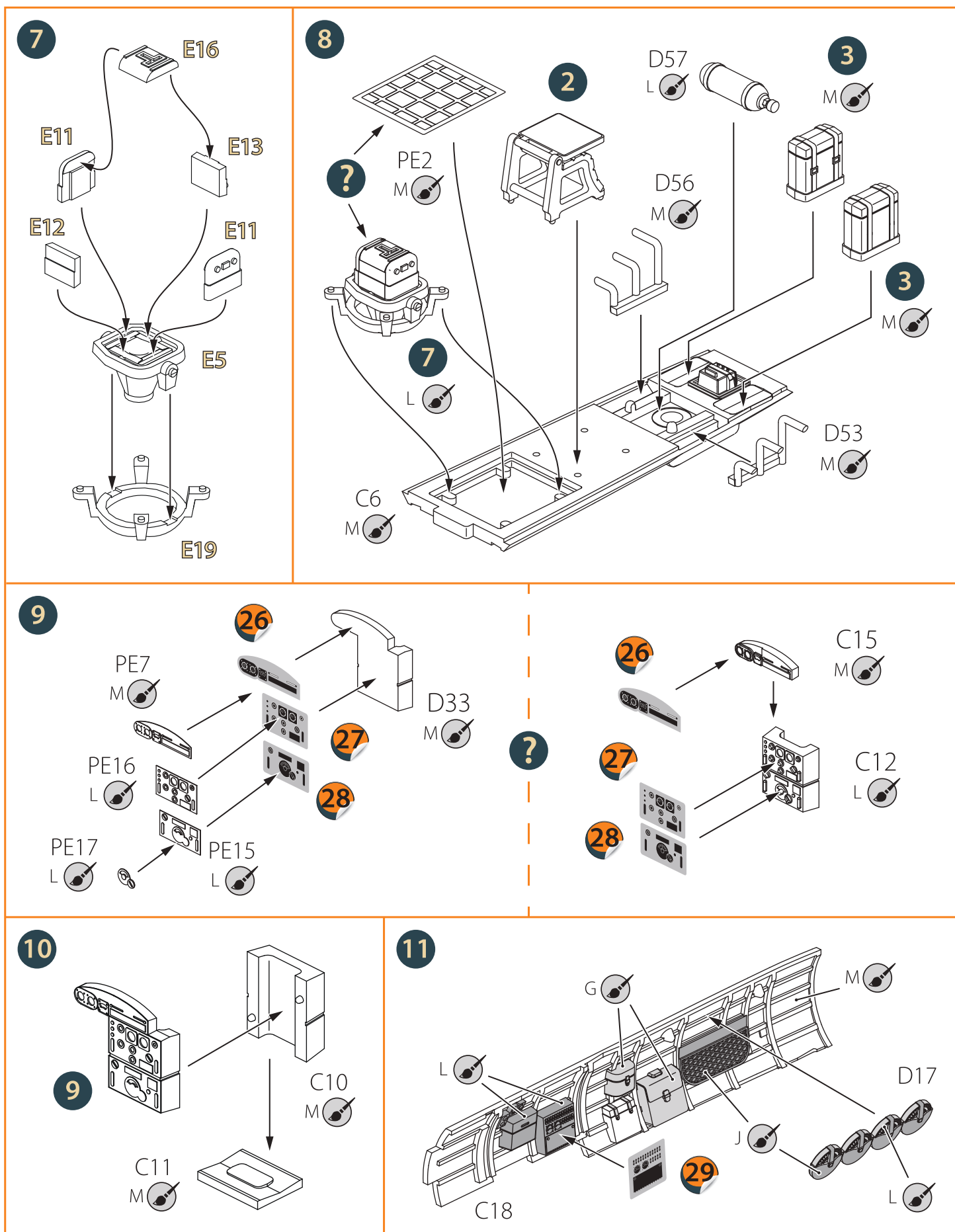


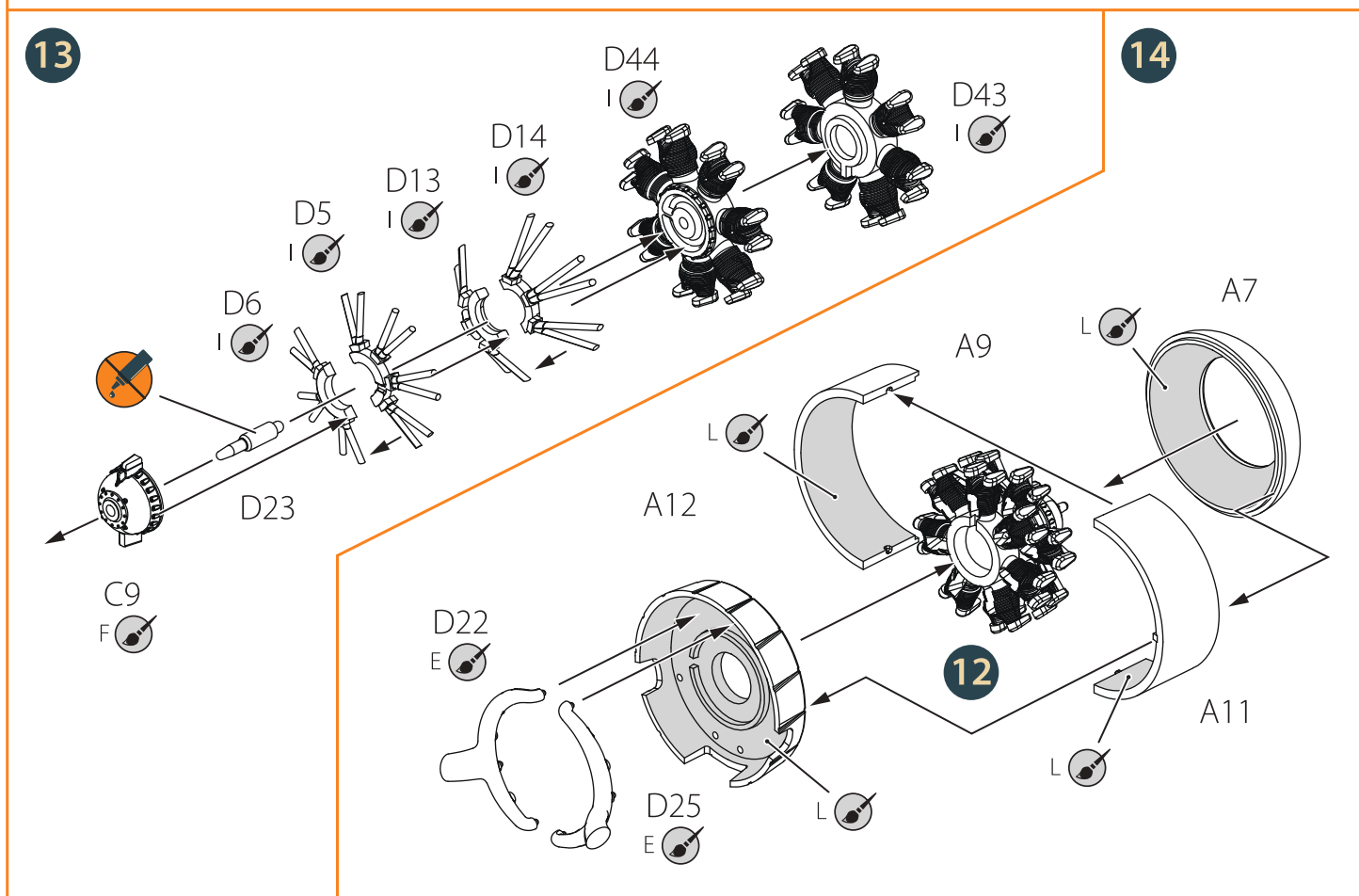
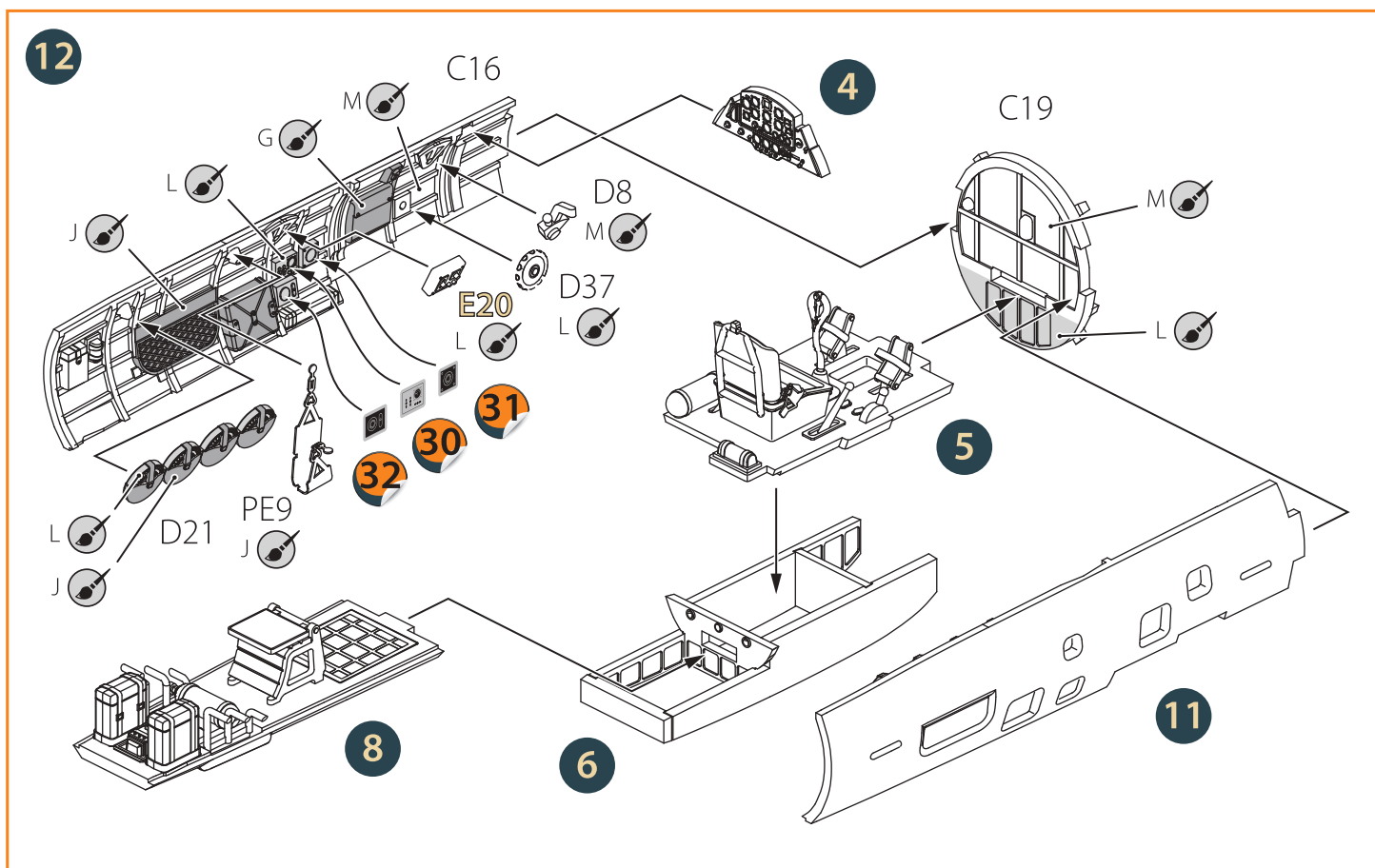
BOMB LOADS SCHEME



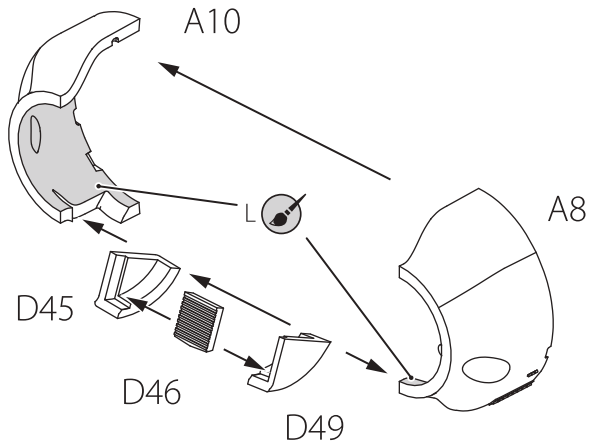
Parts not for use



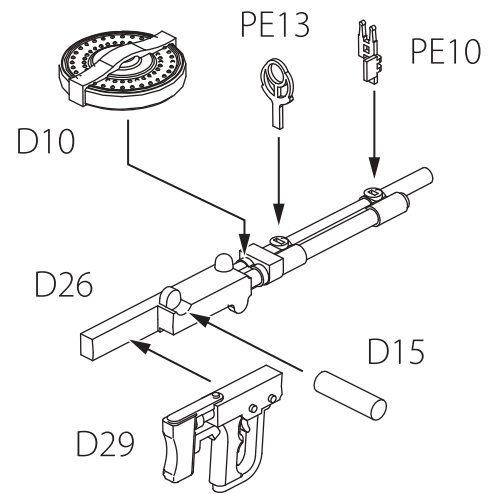




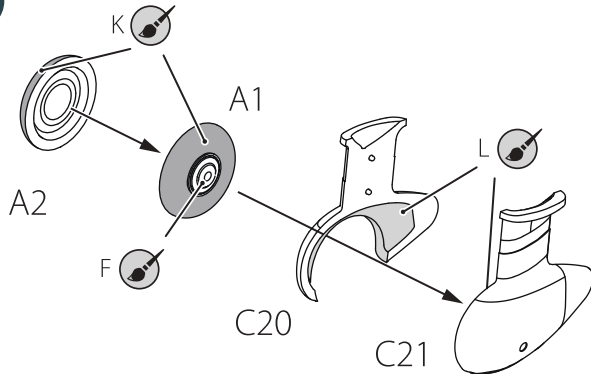
15



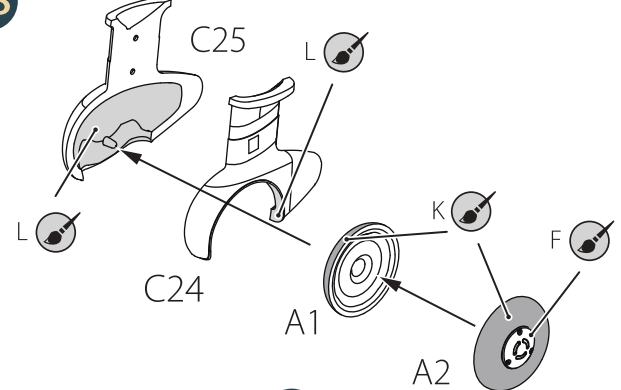
16



17



18

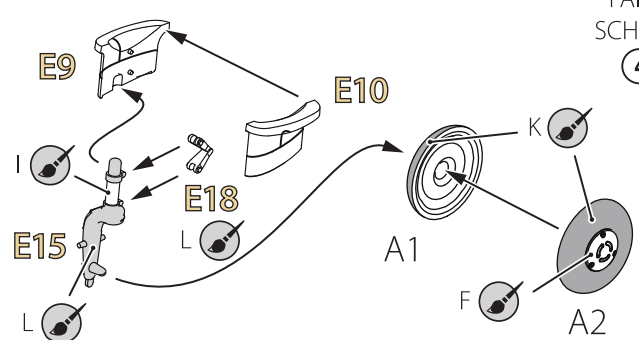
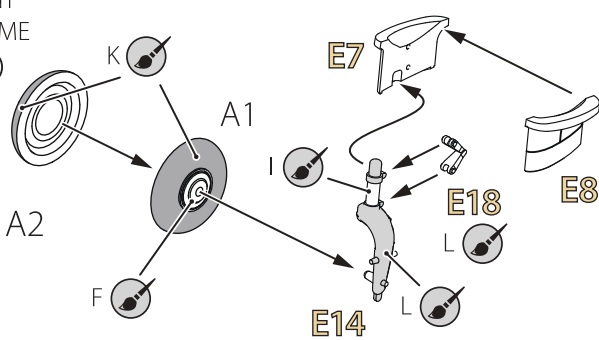


?

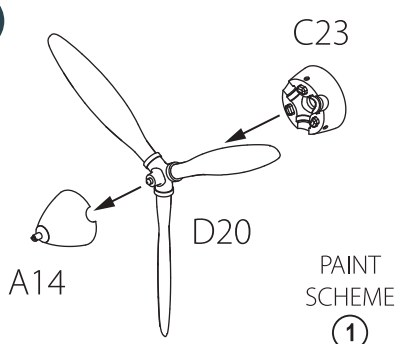
?

PAINT SCHEME ④

PAINT SCHEME ④

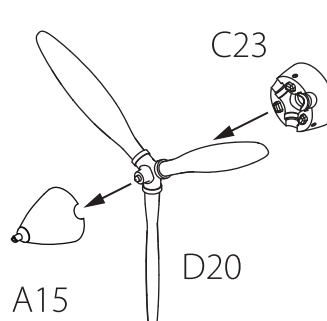


19

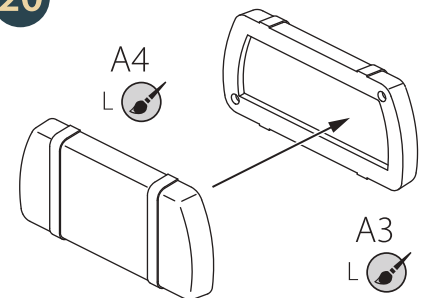


?

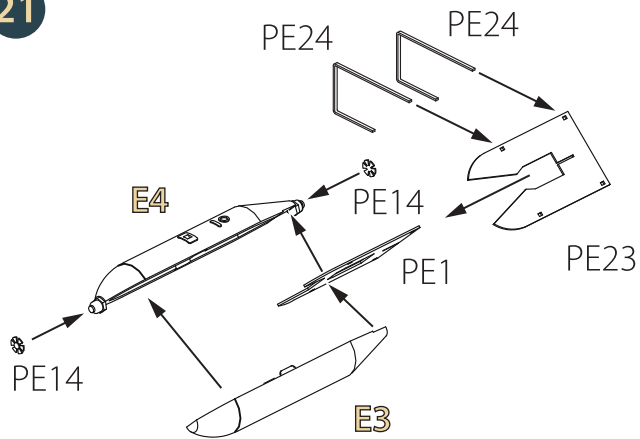
PAINT SCHEME ①



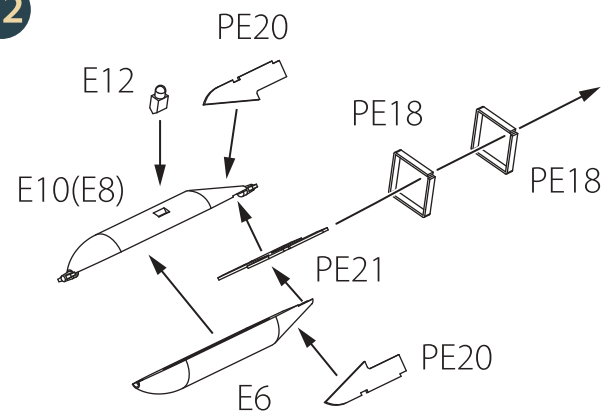
20



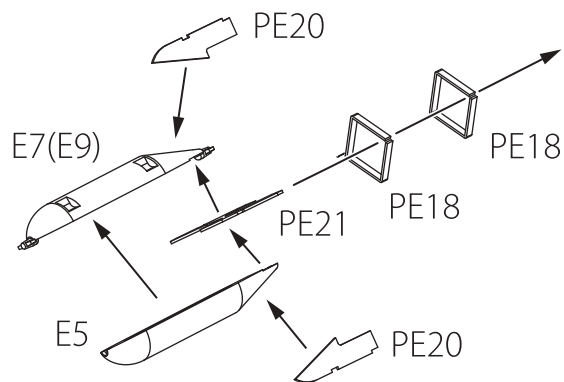
21



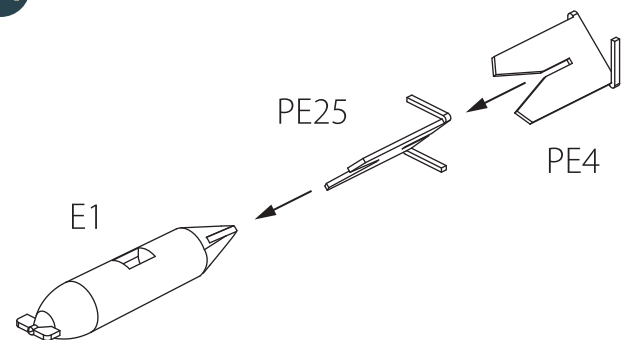
22



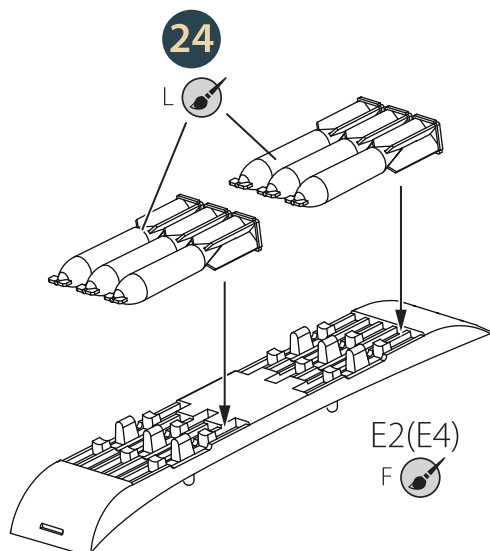
23



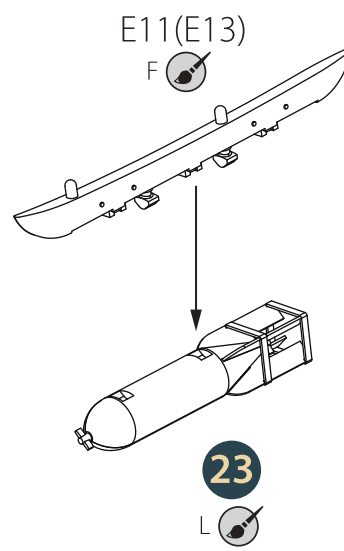
24



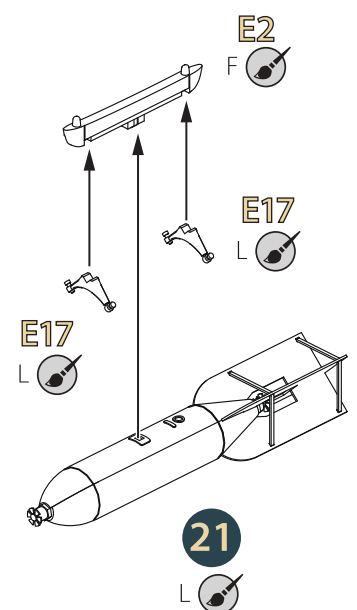
25



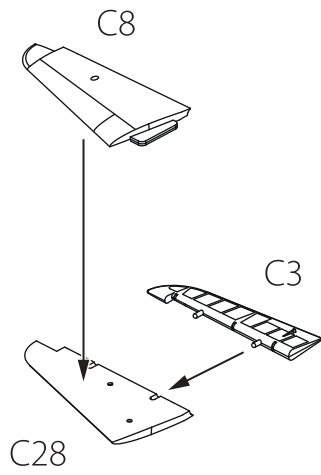
26



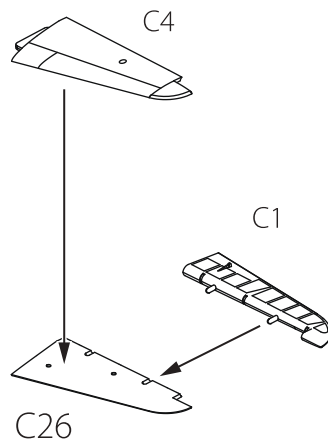
27



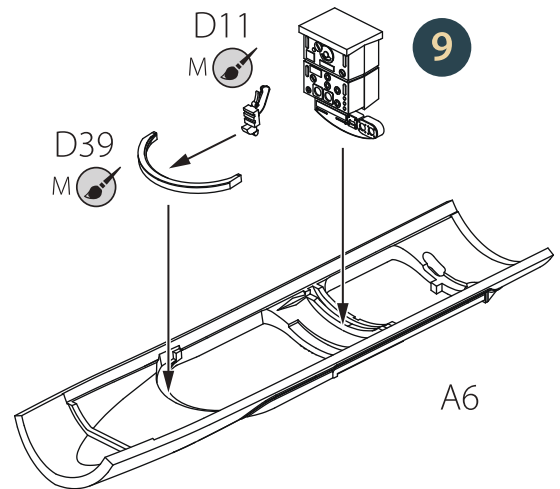
28



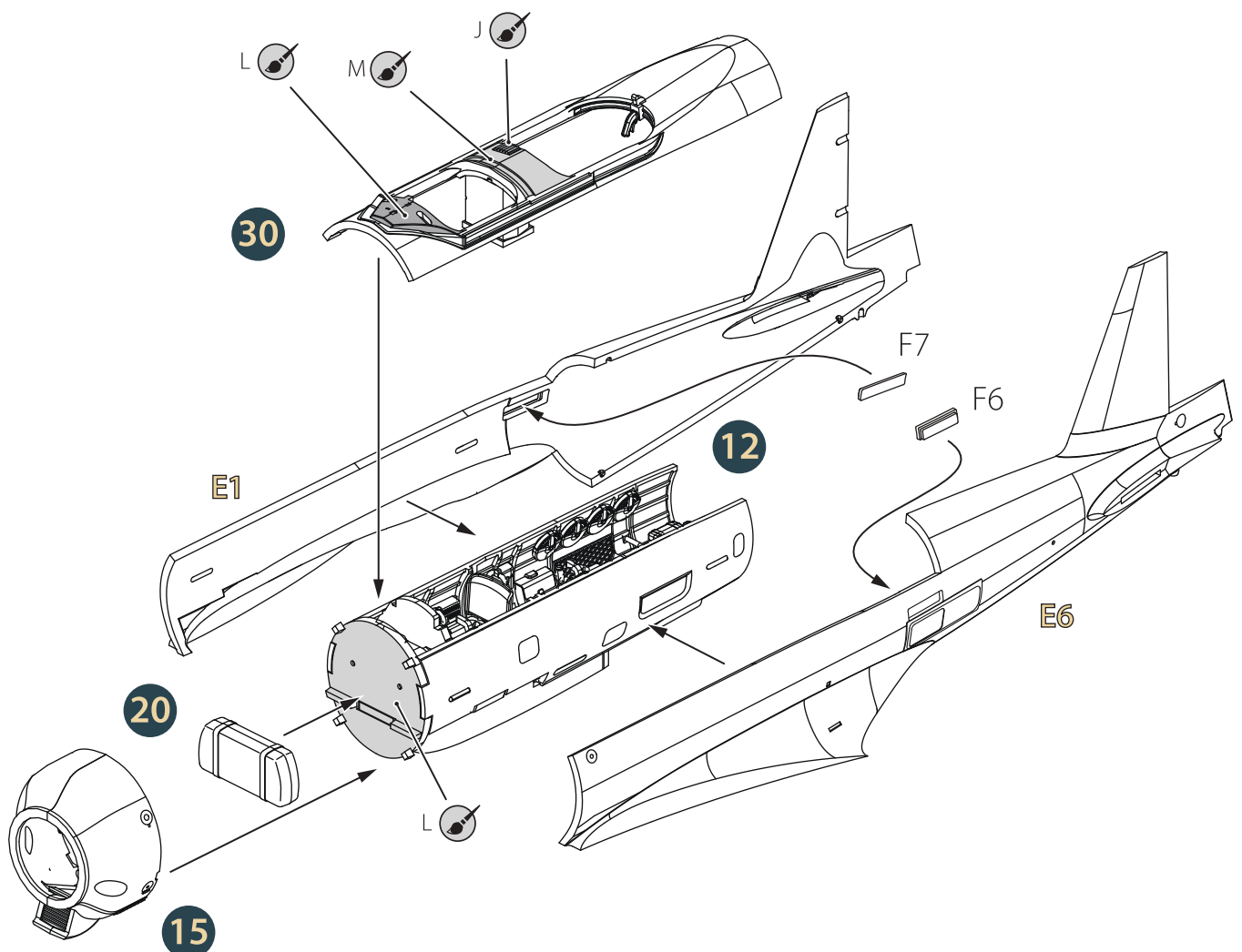
29



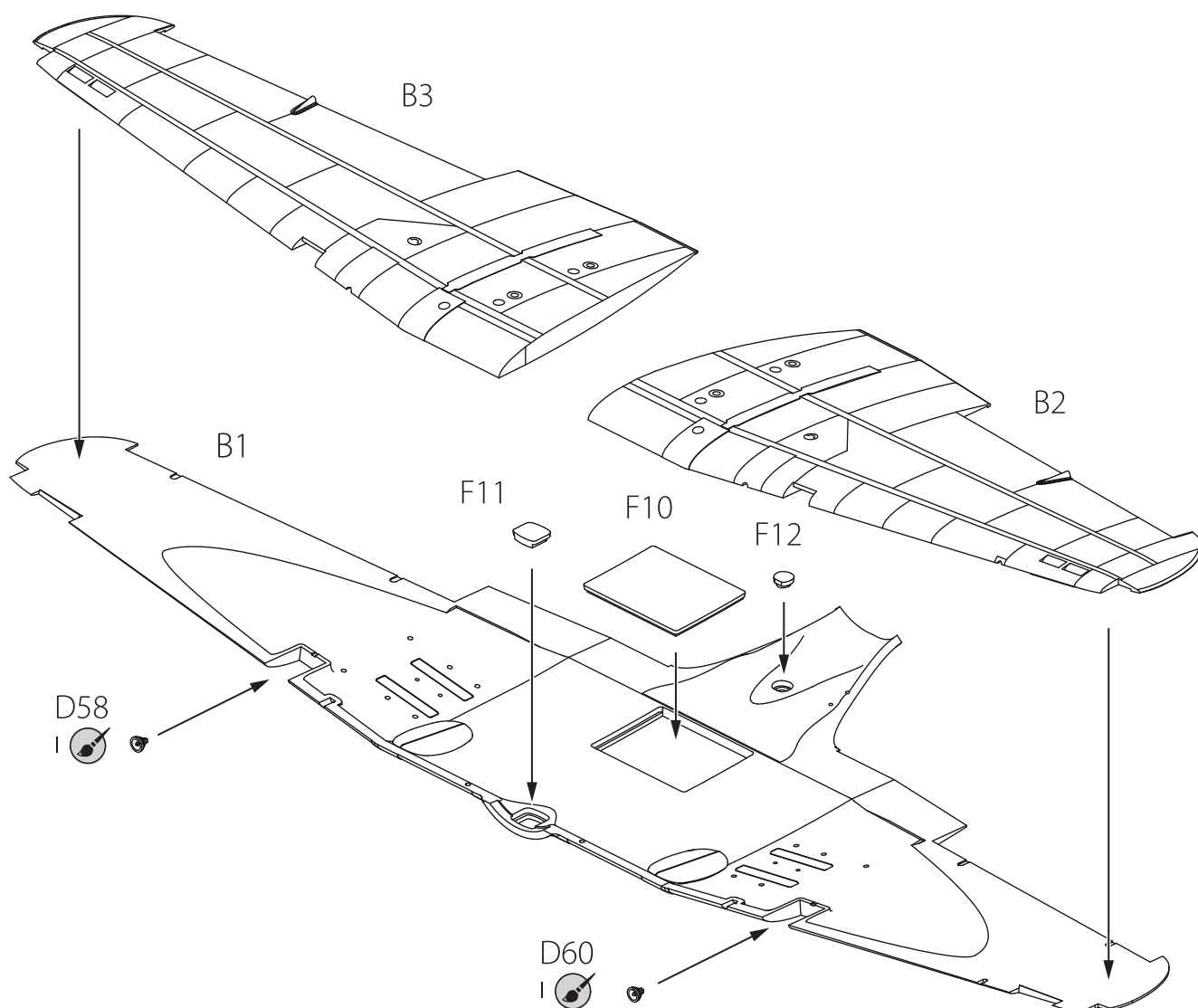
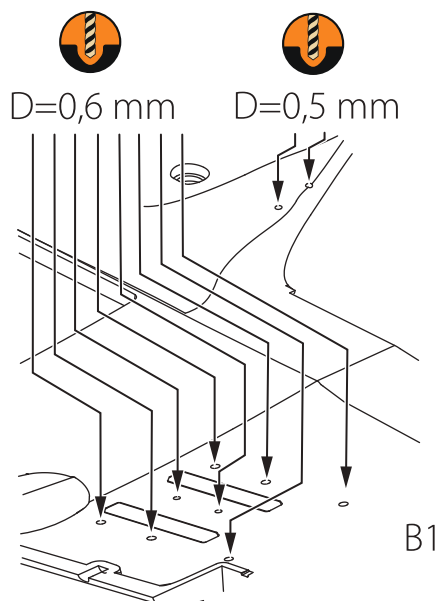
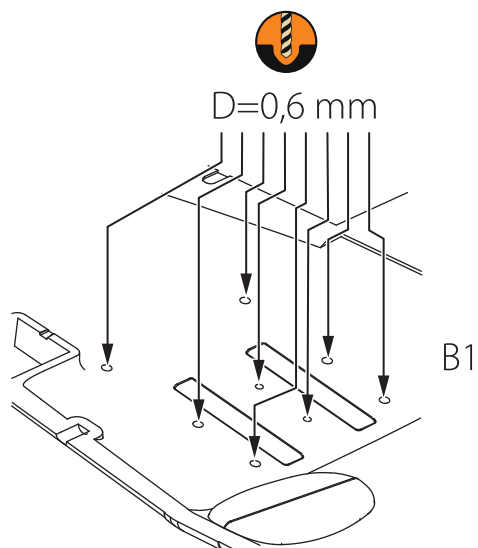
30



31

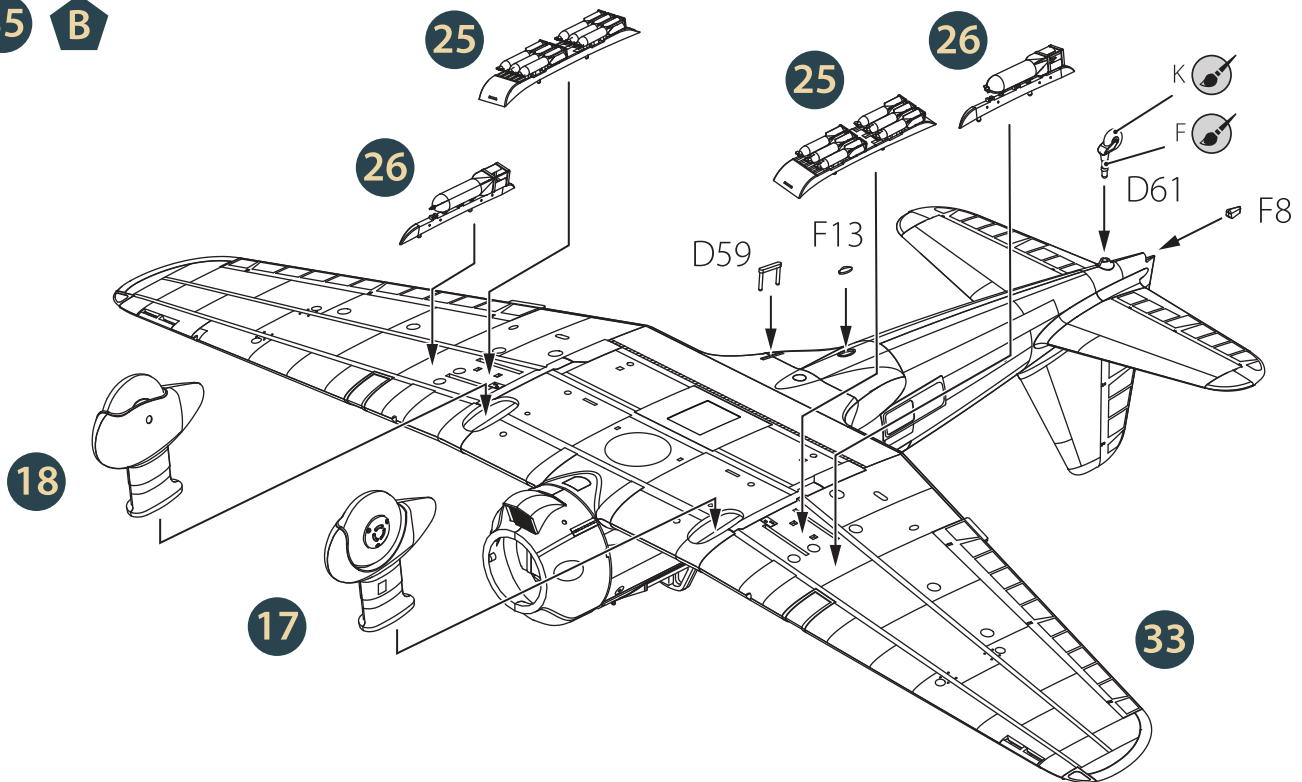


32

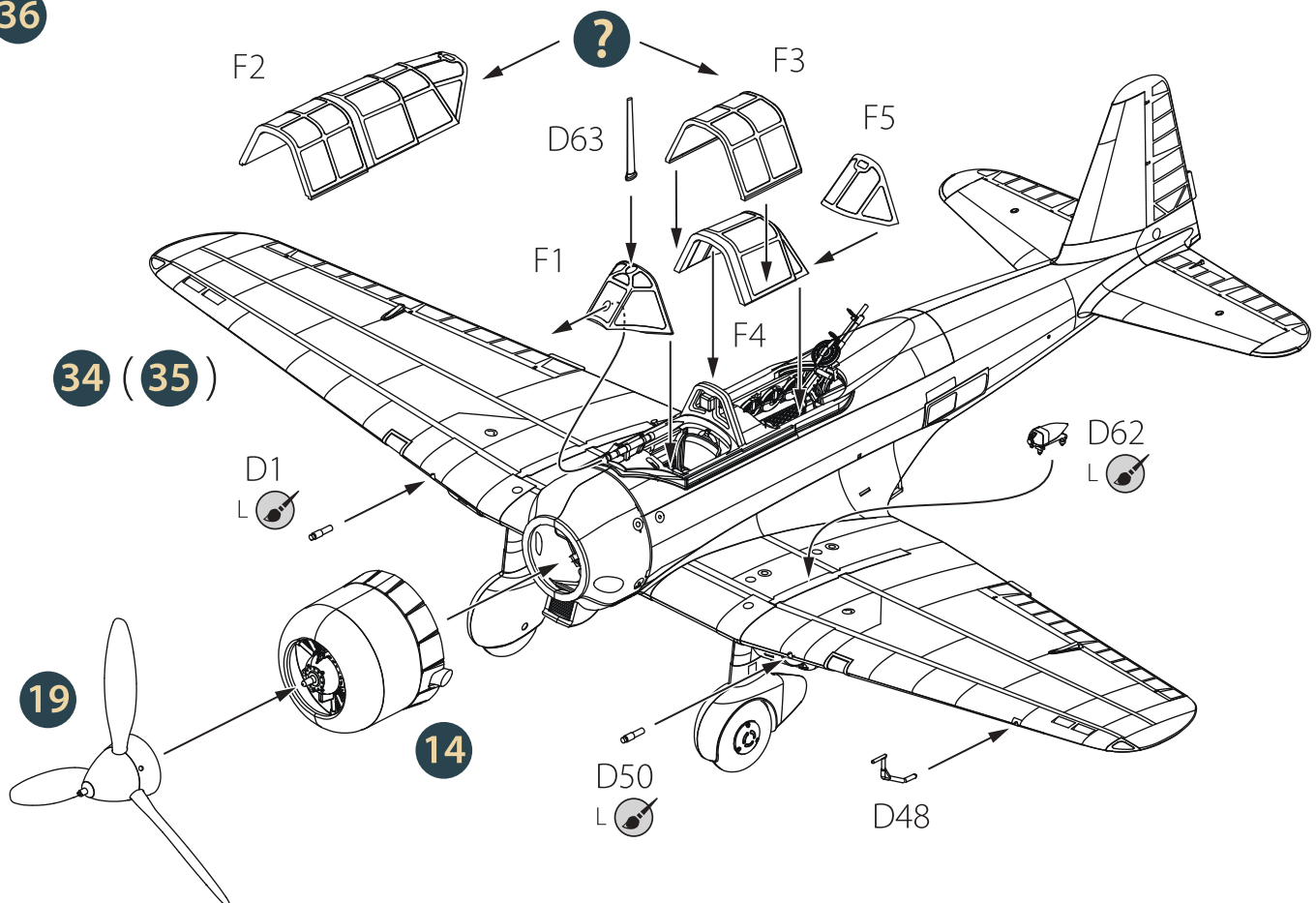




35 B



36





A
MR. COLOR 1
A.MIG-0050
WHITE



B
MR. COLOR 16
A.MIG-0260
IJA GREEN



C
MR. COLOR 28
A.MIG-0191
STEEL



D
MR. COLOR 47
A.MIG-0093
CLEAR RED



E
MR. COLOR 61
A.MIG-0187
BURNT IRON



F
MR. COLOR 128
A.MIG-0258
IJA GRAY GREEN



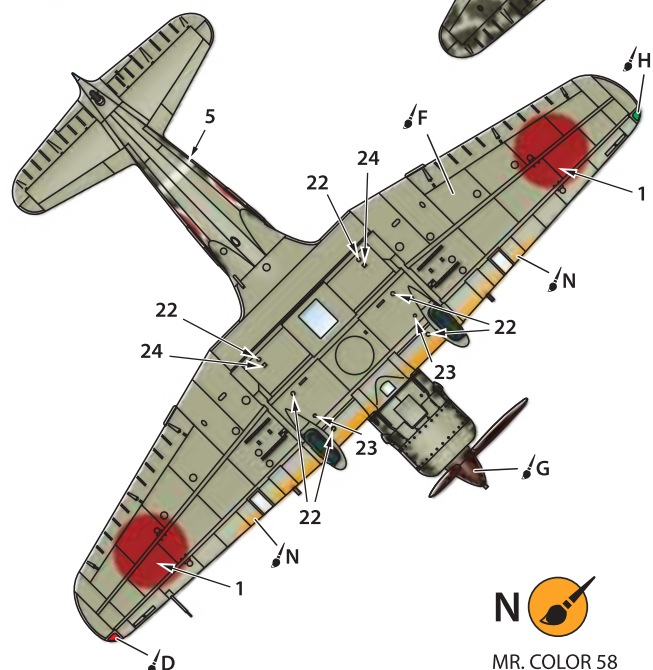
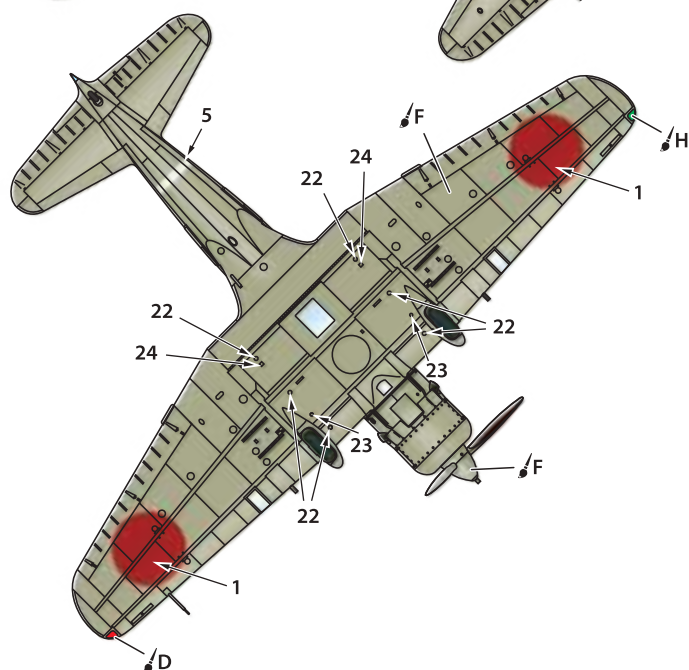
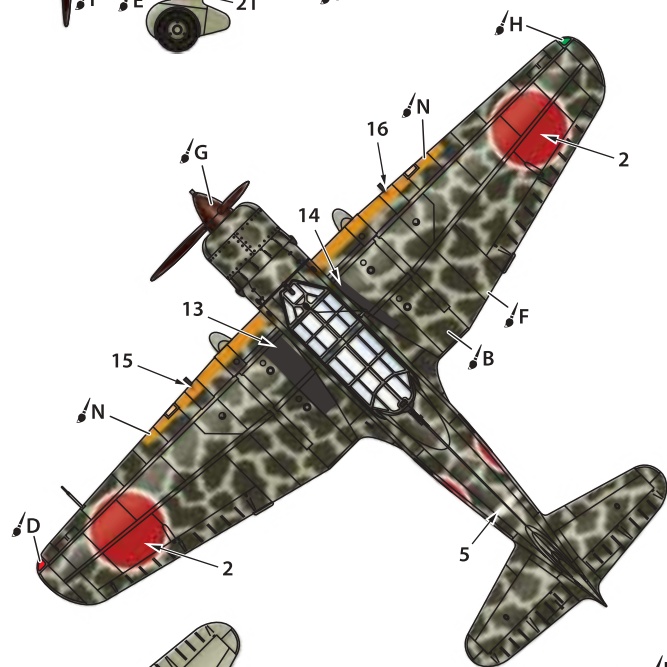
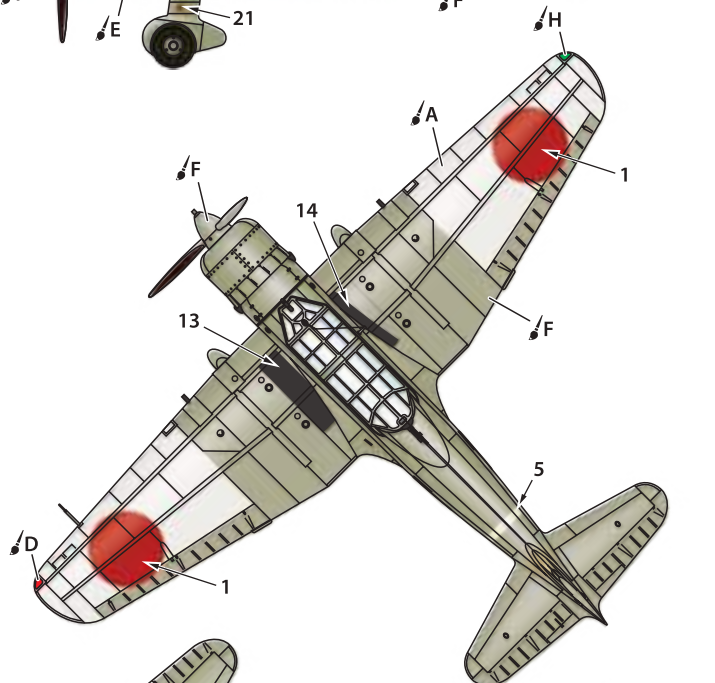
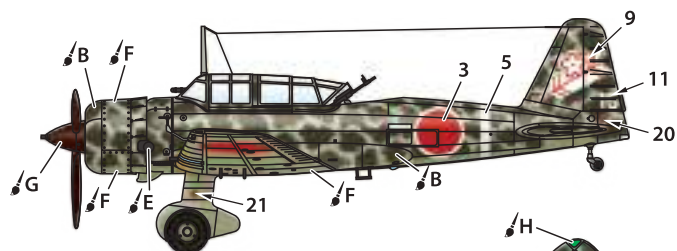
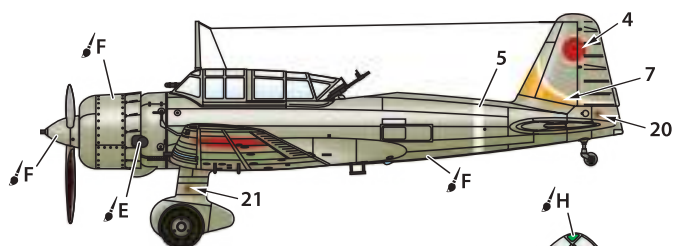
G
MR. COLOR 131
A.MIG-0034
PROPELLER COLOR



H
MR. COLOR 138
A.MIG-0092
CLEAR GREEN

① IJA Type 99 assault/recon. plane Ki-51 «Sonia»
44th Hikosentai, China 1942.

② IJA Type 99 assault/recon. plane Ki-51 «Sonia»
64th Shinbutai, Kyushu 1945.



N
MR. COLOR 58
A.MIG-0125
ORANGE YELLOW



MR. COLOR 1
A.MIG-0050
WHITE



MR. COLOR 16
A.MIG-0260
IJA GREEN



MR. COLOR 28
A.MIG-0191
STEEL



MR. COLOR 47
A.MIG-0093
CLEAR RED



MR. COLOR 61
A.MIG-0187
BURNT IRON



MR. COLOR 128
A.MIG-0258
IJA GRAY GREEN



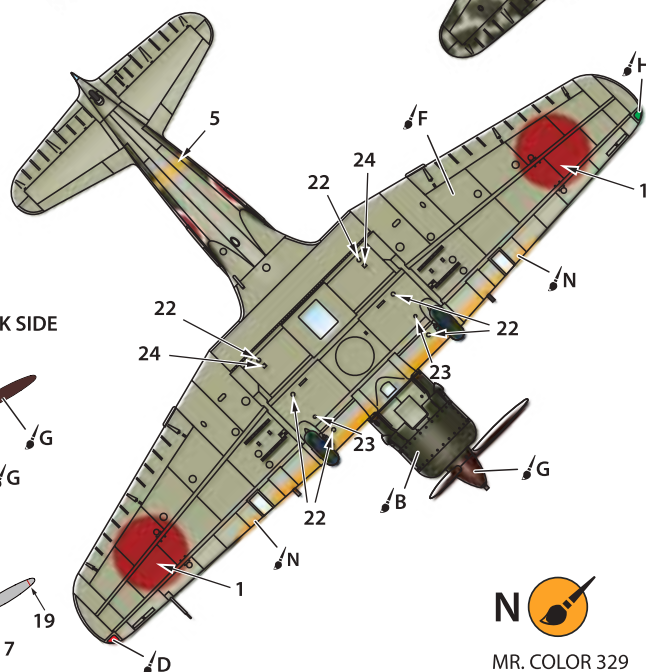
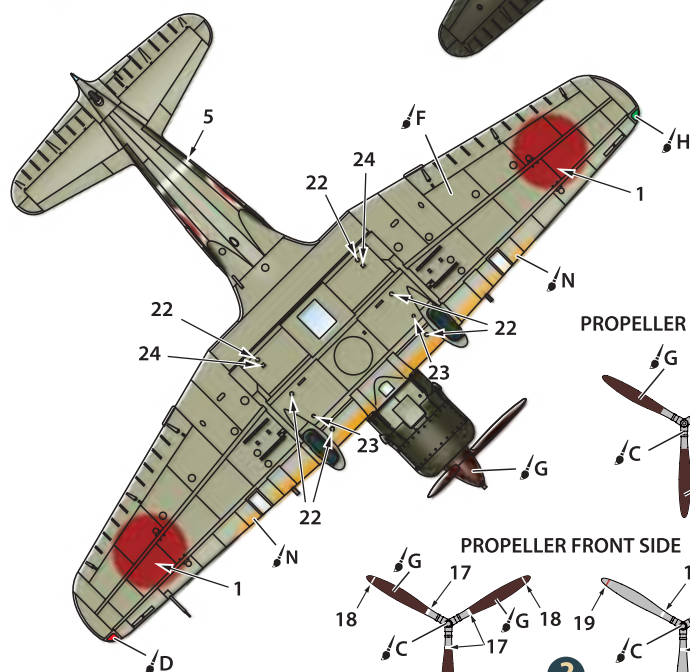
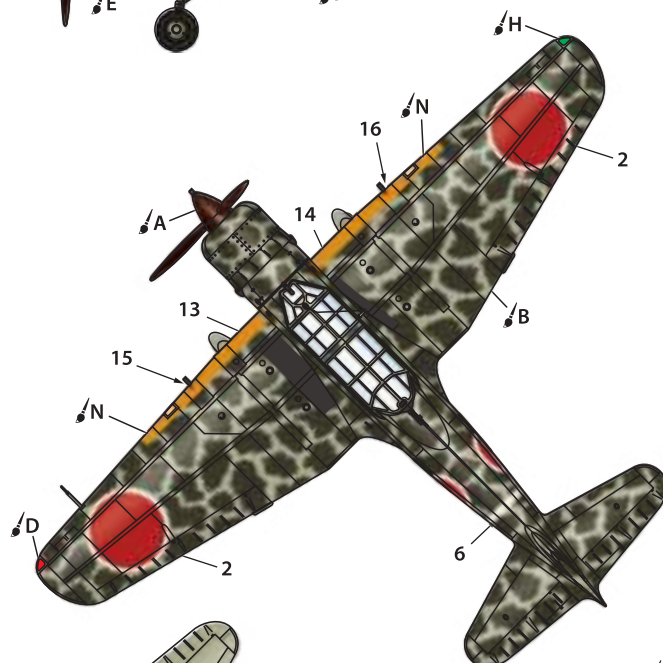
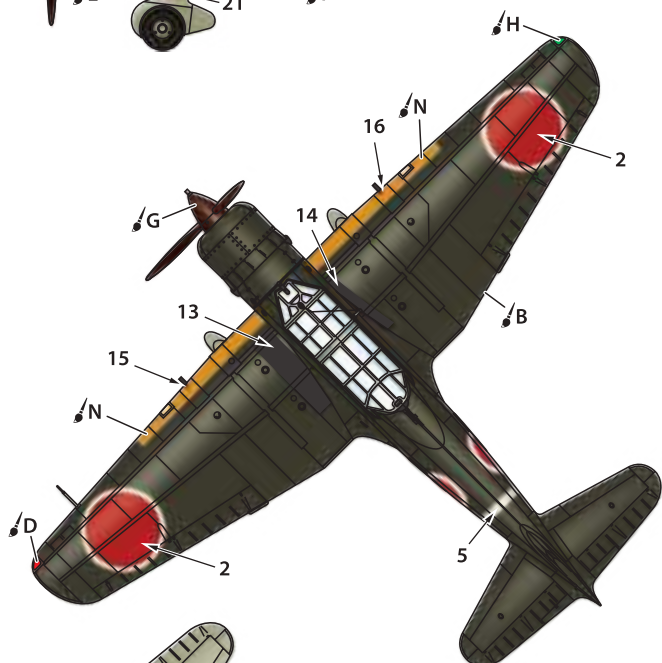
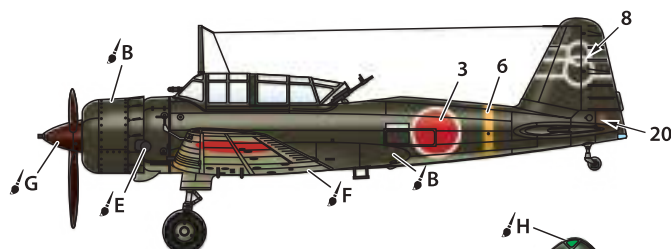
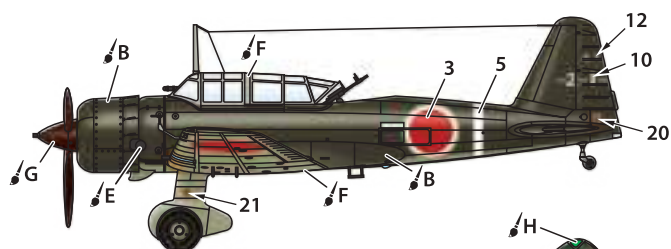
MR. COLOR 131
A.MIG-0034
PROPELLER COLOR



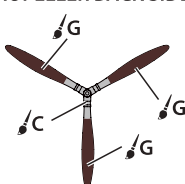
MR. COLOR 138
A.MIG-0092
CLEAR GREEN

- ③ IJA Type 99 assault/recon. plane Ki-51 «Sonia»
6th Sekichotai, Philippines 1945.

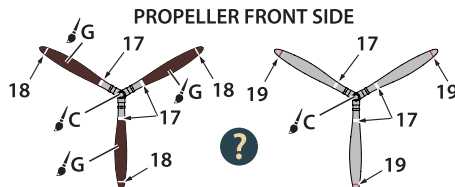
- ④ IJA Type 99 assault/recon. plane Ki-51 «Sonia»
83th Chutai, Borneo 1945.



PROPELLER BACK SIDE



PROPELLER FRONT SIDE



MR. COLOR 329
A.MIG-0125
ORANGE YELLOW



VISIT OUR SITE FOR MORE SCALE MODEL KITS

clearpropmodels.com

